

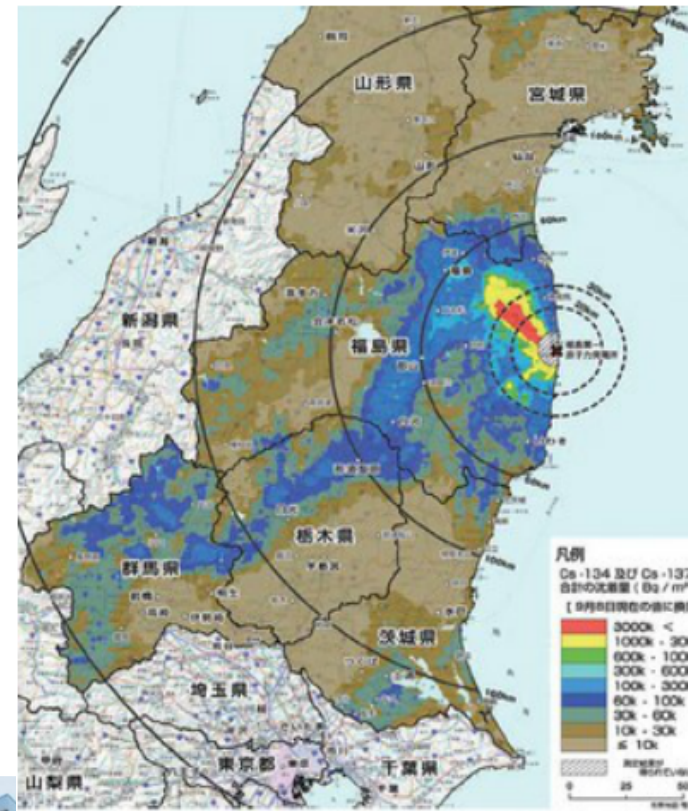
# Continuing damages of Fukushima nuclear accident



Kanna Mitsuta

# Damages of the nuclear accident

- Wide-ranged radioactive contamination
- Over 160,000 people evacuated
- Loss of occupations
- Loss of homelands
- Loss of purposes of lives
- Loss of families
- dividing
- Anxiety over health
- Health damages





“We used to play on the footpaths in the paddy fields in our childhoods, we loved the happiness to share the wild vegetables and mushrooms we’ve taken. Sometimes cities have seemed to us attractive, but we’ve decided to keep living here at last, because we hoped to inherit that kind of happiness to our children. However, the nuclear accident has taken away all of it....”

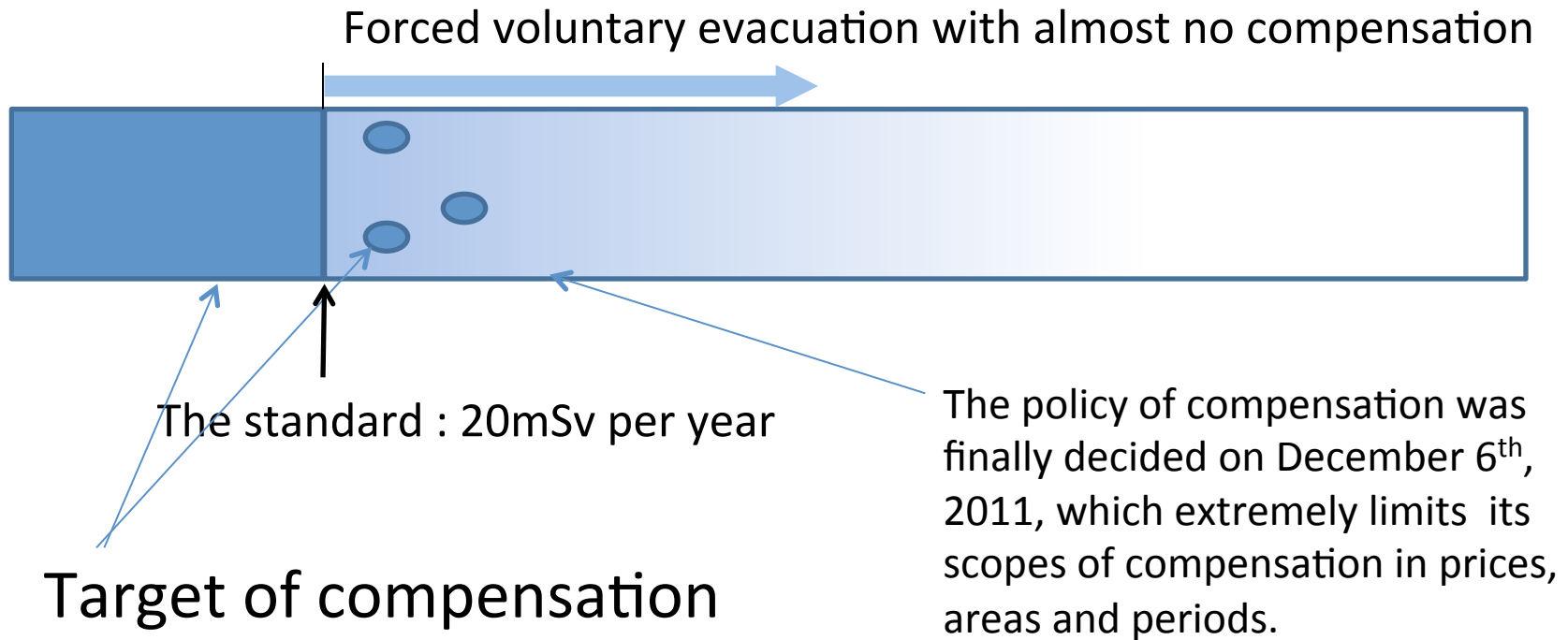


People enjoy the fruits of nature such as wild negetables in spring, mushrooms and riverfishes in autumn. They let their grandchildren eat such fruit as well. They have losen that kind of joy.

Photo: Koshiabura(*Acanthopanax sciadophylloides*) in Iidate Village. 270 thousand becquerel/kg of radioactive cesium has been detected.



# The border : 20mSv per year



## Target of compensation

- Costs of evacuations (transportation cost, moving expenses, accommodation expenses etc. )
- Live and physical damages caused by evacuations
- Costs of inspections
- Mental damages
- Reduction of incomes and properties, etc.

# The standard of evacuation as 20mSv per year

- The maximum annual exposed dose for the publics based on international recommendation and Japanese laws (Act on the Regulation of Nuclear Source Material, Nuclear Fuel Material and Reactors) : 1mSv per year
- Managed area in radiation : 5mSv per year
  - labors by under 18s are prohibited by labor registrations
  - Signs of radioactivity are displayed, which prohibit entries by the general public including children. Only trained persons in advance permitted (Ordinance on Prevention of Ionizing Radiation Hazards)
  - Radiation is strictly controlled
- The standard for Industrial accident approval : 5mSv per year
  - in cases the workers at the nuclear power plants etc. died because of cancers or leukemia
  - 10 workers approved based on cumulative exposed dose over the past 35 years, including the case of approval with 5.2mSv finally

# Many people was forced “self evacuation”

“Our son is at the first grade in elementary school. We used to live in the area with 15mSv per year, so we finally decided to evacuate to Saitama”.

“We have many friends and acquaintances who keep on living there because of some reasons, with continuing anguish and suffering”.

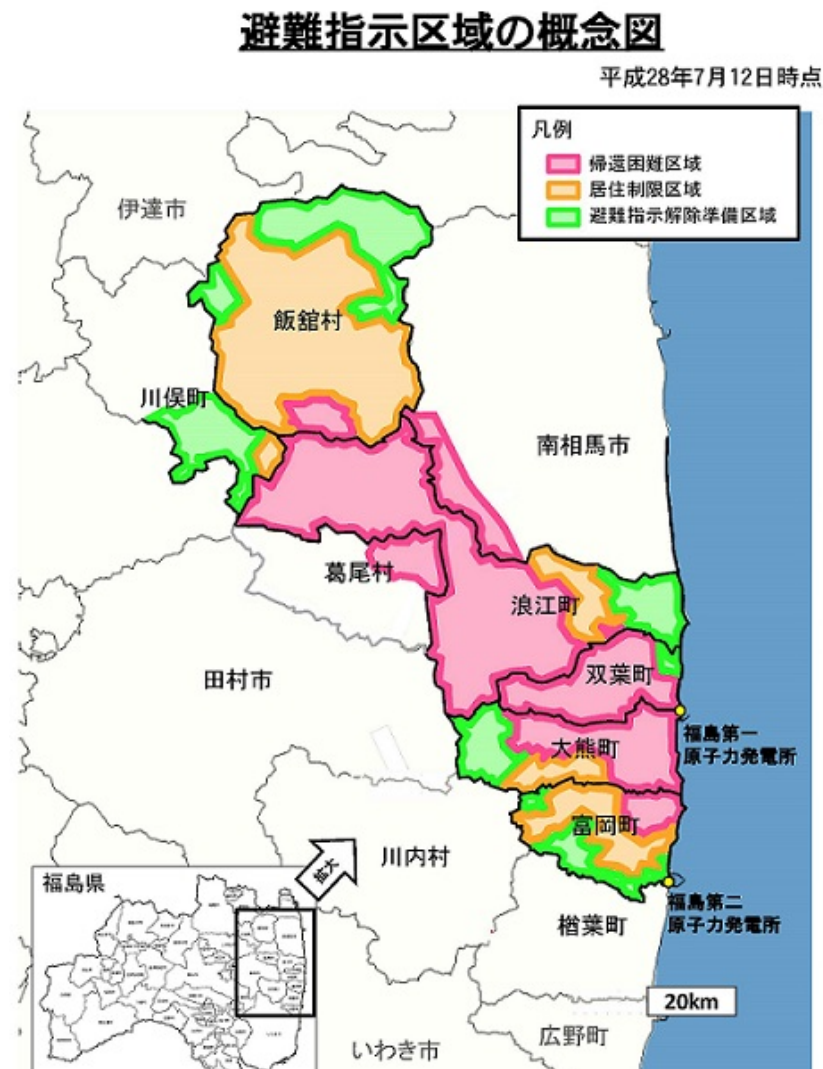
“We already owe a loan for our house there, and we also have to pay our current rent here: we have to pay doubly”.

“The dose is high. It exceeds 1  $\mu$ Sv per hour at home. I’m not sure whether our children are safe in such kind of circumstance.

# Official evacuation zones (2011年)



# (2016年7月)





# The return-promoting policy

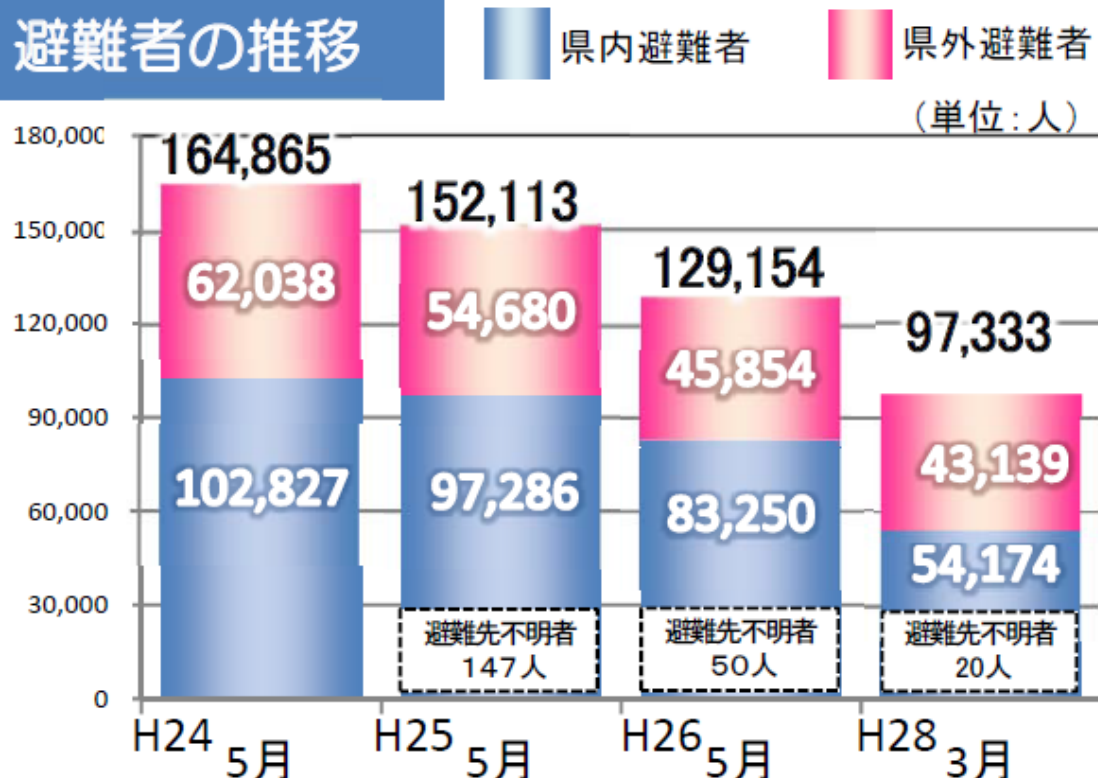
## Reduction of the evacuees = reconstruction?

No evacuees by 2020!

Guidelines for accelerating the reconstruction of Fukushima

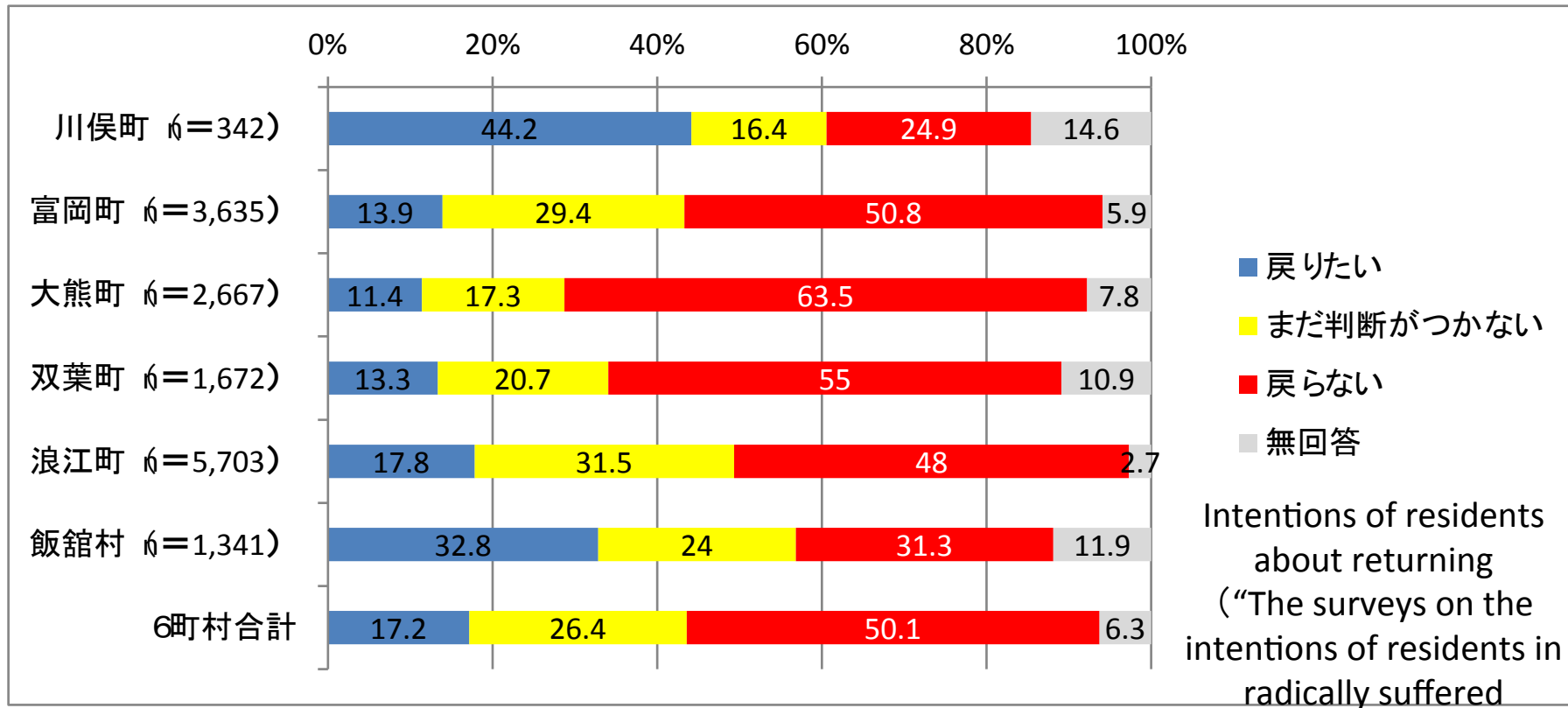
The objective of lifting of Residence restriction area (23 thousand people), Zone in preparation for the lifting of the evacuation order (31.8 thousand people) ...March 2017 at the latest  
Compensations for mental damages will be cut off in March 2018

### 避難者の推移



【出典】福島県災害対策本部「平成23年東北地方太平洋沖地震による被害状況即報」(各月末報)

# Intentions of residents about returning



## Reasons why people can't return

Anxiety over the safety of Fukushima Daiichi Power Plant / Anxiety over Intermediate Storage Facilities / Anxiety over drinking water  
 Anxiety over radiation / Medical circumstance / Ruined houses

Young generations won't return

# Cutting off the support of residences

- Planned to end the support of residences to the evacuees out of the ordered area by the Government based on Disaster Relief Act in March 2017
- Rented housing System Based on Disaster Relief Act = finally payed by Nation in 90%, Fukushima prefecture in 10%

1892年3月11日第3種郵便物認可 ©朝日新聞社 2015年 46340号(日刊)

2015年(平成27年)  
5月17日  
日曜日

天気 6 9 12 15 18 21時

東京	☀	☀	☀	☀	☀	0	27
横浜	☀	☀	☀	☀	☀	0	26
千葉	☀	☀	☀	☀	☀	10	27
さいは	☀	☀	☀	☀	☀	0	29
札幌	☀	☀	☀	☀	☀	30	15
仙台	☀	☀	☀	☀	☀	0	26
名古屋	☀	☀	☀	☀	☀	0	29
大阪	☀	☀	☀	☀	☀	0	27
福岡	☀	☀	☀	☀	☀	10	28

朝日新聞東京本社 本日の編集長=井手雅春  
〒104-8011東京都中央区築地5-3-2 電話03-3545-0131 www.asahi.com

東京国立博物館にて  
6/7月まで開催中  
鳥獣戯画  
主幹・東京国立博物館、山田芳、伊藤智雄  
共同・国家 鳥獣戯画  
鳥獣戯画の歴史・文化・研究  
鳥獣・鳥獣戯画  
※併用されている場合は各館別

オピニオン&フォーラム・社説・声  
社説 少年法の対象年齢/スポーツ庁の意義  
フォーラム PTAの改善策は 8.9面

The Asahi Shimbun  
GLOBE  
朝日新聞

# Evacuees are...

- We left our hometown only for the purpose of keeping our children in safe. We've desperately struggled to keep living as refugees..now is the government going to cut off our life lines?
- How can the government say “supports for migration” after depriving our residences : our bases of lives?
- Please just image that you have no houses to live.
- Does the government intend to recognize us as “the selfish runaways”, to make our existence vanished from the first?

About 126 thousand households will be cut off the provision of temporary houses. 70% of them have still not decide what to do in future. (26 March, 2016)

# Circumstance enough to be returned?

## 磐越自動車道(新潟ーいわき)PA・SAの土壤汚染

放射性セシウム 134 + 137 の合計値 (単位: Bq/m<sup>2</sup>) 測定日: 2014 年 7 月 17 日 ~ 31 日 (河野益近氏の資料より)

新潟県 ← | → 福島県 (ほぼ全域が汚染地帯で避難が必要!)





# Children in Fukushima 172 thyroid gland cancer diagnosed or suspected

	The number of targets & examinees	Thyroid gland cancer dignosed or suspected	Determined after surjeries	Reference
First round examination (2011～ 2013)	Targets: 367,672 Examinees: 300,476 (81.7% in examination rate)	115	101	101 cases of surgeries including 1 of
Second round examination (2014～ 2015)	Targets :381,286 Examinees: 267,769 (70.2% in examination rate)	57	30	53 judged as A at the first examination in 57 diagnosed or suspected as suffered from cancer
Total		172	131	14

# According to the estimation of National Cancer Center...

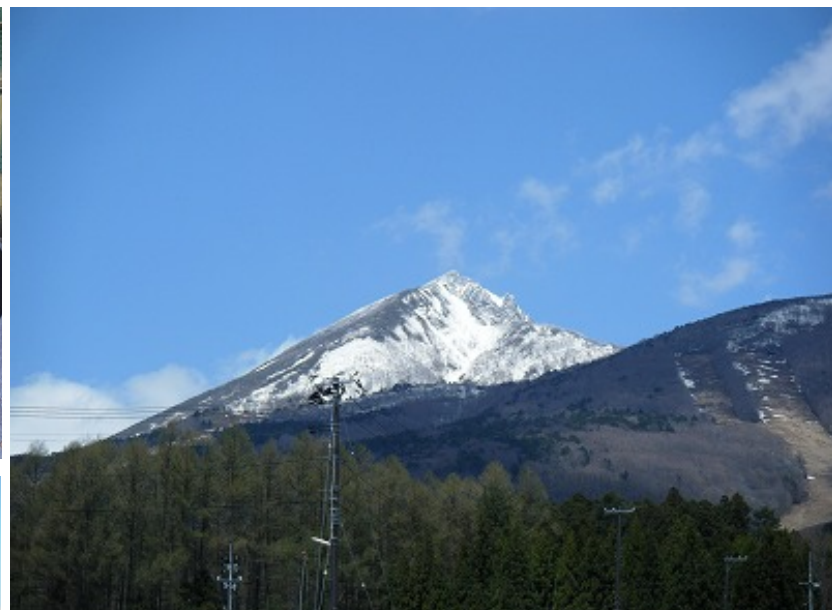
The number of medically compromised people of thyroid gland cancer under 18 is estimated at 2.0 as of 2010.

“medically compromised people” includes those who has no subjective symptoms with undetected cancers

# Chernobyl and Japan

	Chernobyl	Japan
Evacuation and Return	Obligation of evacuation with over 5mSv per year Right to evacuate with over 1mSv per year: nationally supported	Ordered to evacuate over 20mSv per year Compensation by Tokyo Electric Power Company Public support
Physical examination	Comprehensive physical examination in wide-ranged area (over 0.5mSv per year)  Accumulations of general and comprehensive datum	Within Fukushima prefecture Diseases other than thyroid gland cancer have not been perceived systematically
Recuperation	Recuperation is regarded as National business in Belarus and Ukraine. 50 – 100 thousand children recuperate for 3 weeks	No public “recuperation” Relying on private sectors

# Poka-poka project in Fukushima



# 私たちが原発輸出に反対する理由①

- 日本が経験した福島原発事故の甚大な被害。大量の放射性物質が拡散し、多くの人たちが故郷を失って苦しんでいる状況である。国土が汚染され、美しい自然とそこに生きる人たちの暮らし、甚大な国富が失われた。収束までには長い年月がかかる。しかも事故原因の究明は完了していない。かかる状況で原発輸出を行うことは倫理的にもゆるされない。

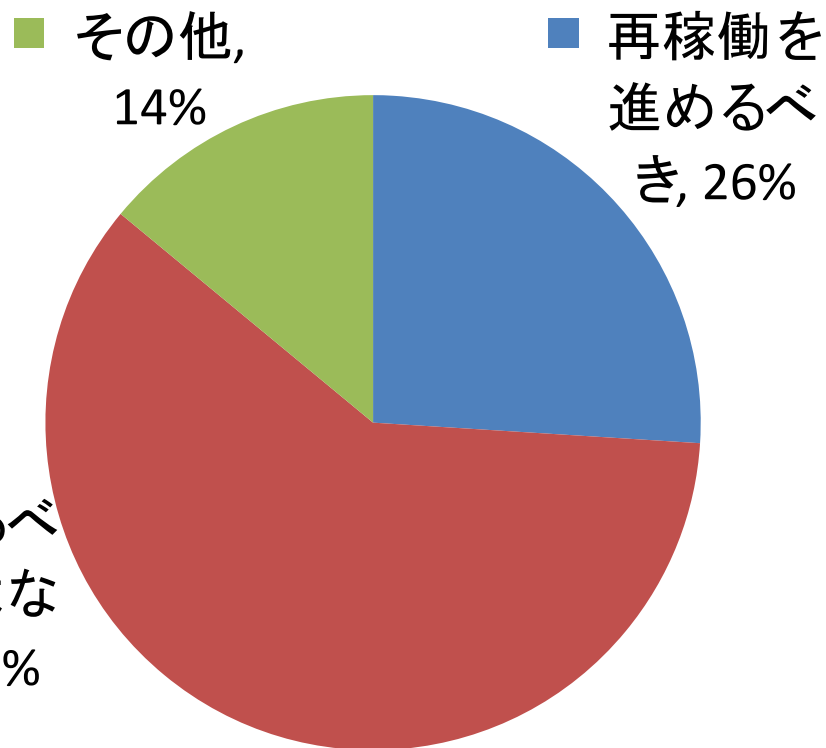


# 私たちが原発輸出に反対する理由②

- 被ばく労働や放射性廃棄物の処分など原発が抱える解決しえない問題
- 移転された核物質・技術などの転用リスク、テロ・紛争時に標的になるリスク。
- 民主主義の理念と相容れない。また、反対を唱える住民に対する弾圧が行われる場合もある。
- 大規模集中的な発電であり、巨大な利権をもたらす原子力産業の存在は、より小規模で分散型な発電システムの機会を損ね、むしろ貧富の格差を生みかねない。

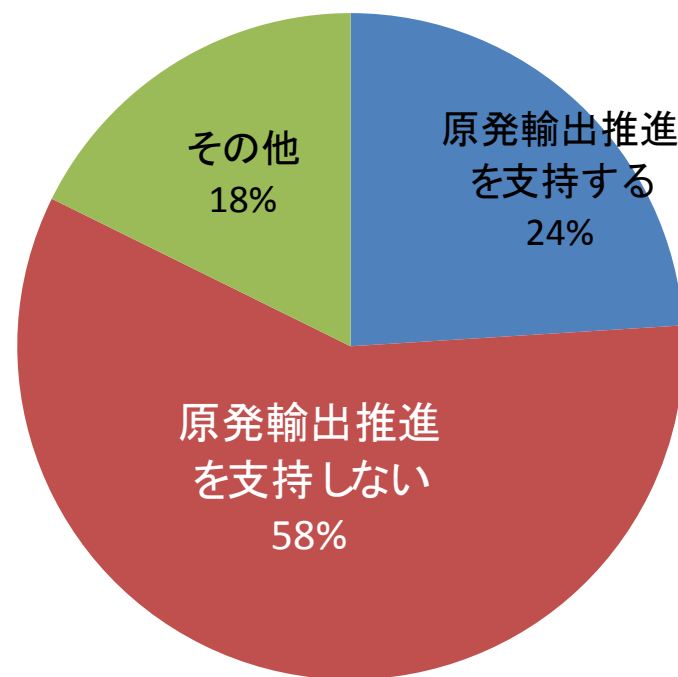
# 多くの国民は、脱原発を望んでいる

再稼働に関する意見



(日経新聞 2016年2月29日付)

原発輸出に関する意見



(時事通信 2013年6月16日付)